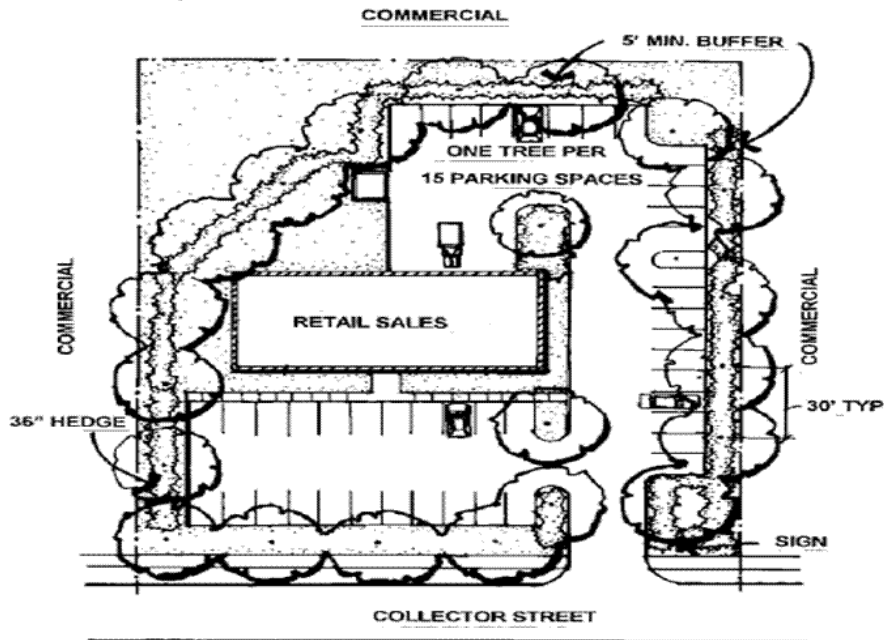


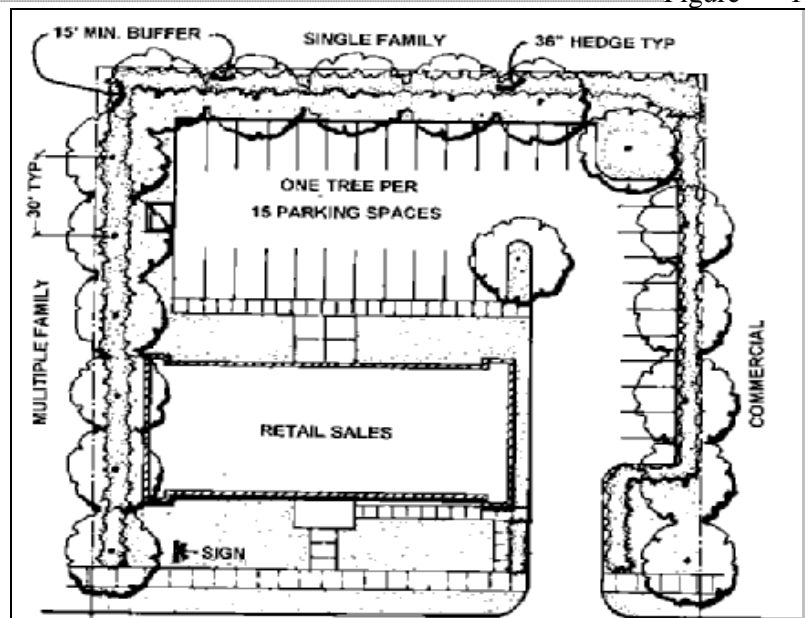
**Land
Development
Code**



**City of
Hickory, NC**



C. Figure 10- 1



Parking Area Buffers
 Figure 10-2 Parking Area Landscaping Interior Parking Area Landscape Requirements – New Parking Areas

- (1) All rows of parking shall be terminated by a canopy tree planted within a landscape island. The landscape island shall be a minimum dimension of six (6) feet by eighteen (18) feet for single-loaded parking rows and six (6) feet by thirty-six (36) feet for double-loaded parking rows. Trees planted within perimeter landscape strips may be used to satisfy this requirement.
- (2) One (1) canopy tree shall be required for every fifteen (15) parking spaces, and one (1) shrub shall be provided for every ten (10) parking spaces required. All vehicular parking spaces must have at least one (1) tree within sixty (60) feet of each parking space.

- (3) At least seventy-five (75) percent of all trees required by this section shall be canopy trees as listed in the Manual of Practice. When planting under overhead utility lines, two (2) understory trees must be substituted for every required canopy tree. Refer to the Manual of Practice for a list of trees that are approved for planting under utility lines.
- (4) For parking areas over 40,000 square feet, a minimum ten (10) foot wide continuously planted median shall be installed along the length of the longest interior parking row, to break up large areas of pavement. Parking areas over 80,000 square feet shall require two of the described medians. This does not apply to vehicular sales or rental areas.
- (5) Landscape islands and planting areas shall be protected from vehicular encroachment by curbing or wheel stops at least 6 inches in height.

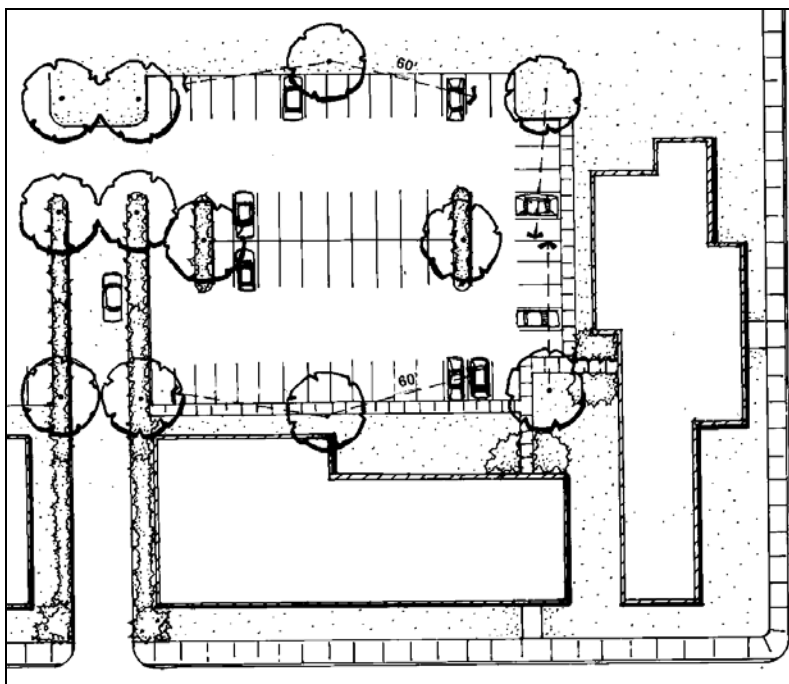


Figure 10-3: Interior Parking Area Landscaping

D. Interior Parking Area Landscape Requirements – Existing Parking Areas

For expansion or renovation projects that are required to follow landscape requirements on all or part of the site (per Section 9.13.7), the standards as outlined in Paragraph (c) above are applicable. However, the required parking may be reduced by 20 percent to allow for the provision of interior landscaping. Under circumstances where the application of these requirements is infeasible or unworkable, the applicant may submit an alternative landscape plan, as outlined in Section 9.13.8.

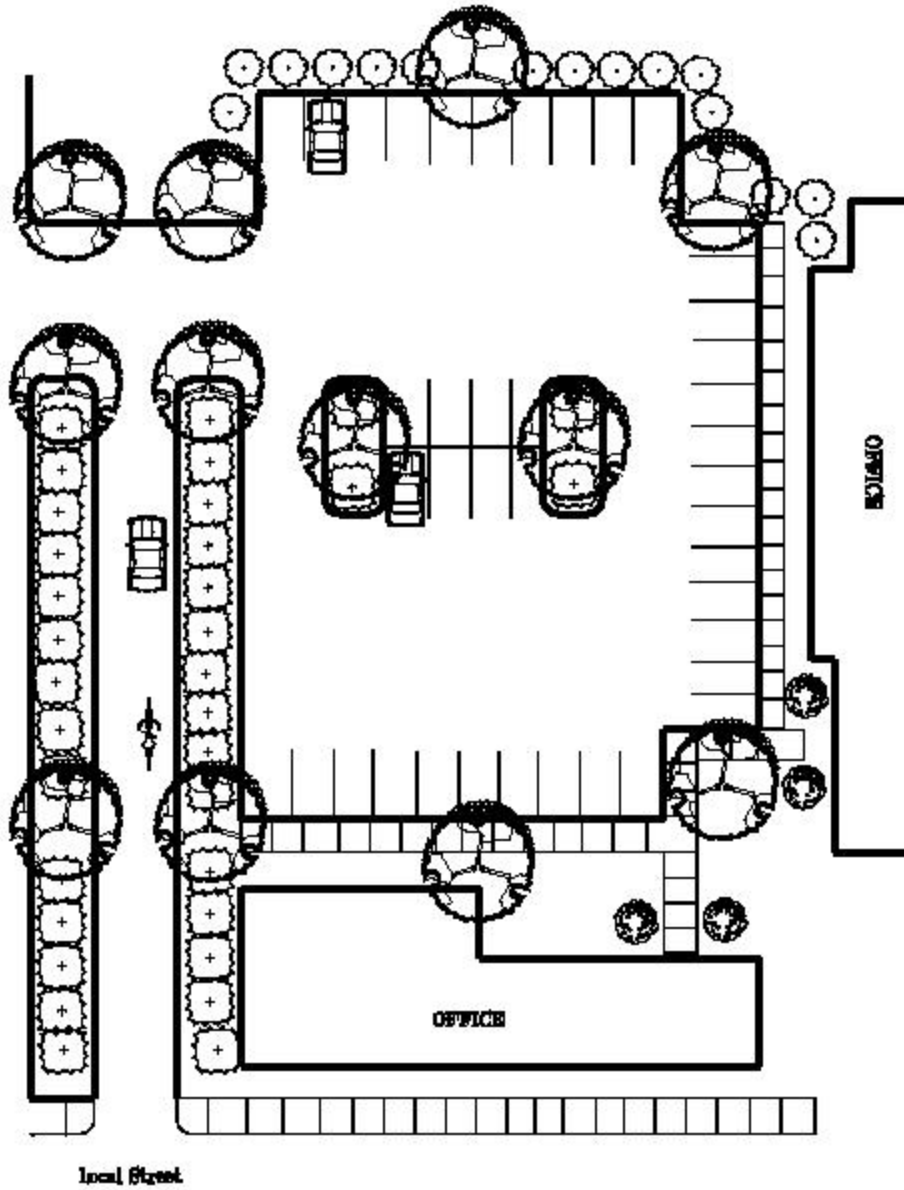
9.13.8 Alternative Methods of Compliance

- A. The Planning Commission, by means of a Special Use Permit in accordance with Sec. 2.4, shall have the authority to waive or reduce the requirements of Sec. 9.13, Landscaping and Screening provided that the alternative landscape plan meets or exceeds the objectives of this Land Development Code.

City of Hickory
Landscape Ordinance
And Tree Preservation
Handbook



Interior Parking Area Landscaping



Conceptual Diagram of Landscaped Medians for Parking Lots Over 40,000 Square Foot

